

Product Information

GC-Gepackte-Saeulen-
CS-E

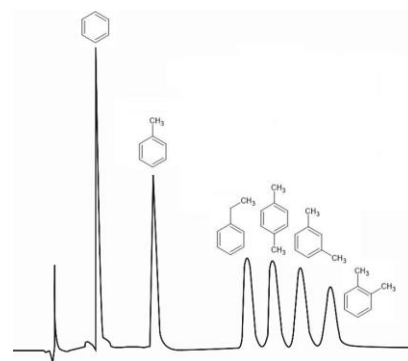
March 2022

Gas Chromatography with Packed Columns

P/N Group 362999

For pricing, an overview of possible dimensions and some of the available phases and support materials as well as extra services such as conditioning or testing please refer to our catalogue 2020-d, pp. 34 – 35.

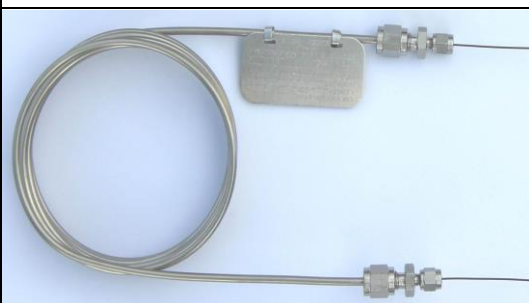
BTEX Compounds on CS-BTEX (2 m x 1/8" x 2 mm, 80 °C isothermal, 30 psi N₂).



Packed GC columns seem to have been forgotten by many analysts, certainly due to capillary columns having firmly established themselves as *state of the art* for many years. However, packed GC columns offer many advantages that can even make them superior to capillary columns in certain applications.

The resolution that packed columns can achieve may generally be lower than that of capillary columns, however, especially for routine separations, many other factors play a role. For example, packed columns are usually much more economical and, due to their larger amount of stationary phase, tend to have a longer service life than capillary columns. Mechanically, they are also significantly more robust than fragile fused silica capillaries. Additionally, an almost endless selection of support materials and stationary phases is available for packing, which can be further fine-tuned for the respective application by optimization of particle size and the degree of coating. Finally, packed columns allow for much higher sample loads and are therefore ideally suited for less sensitive detectors, such as thermal conductivity detectors.

CS-Chromatographie Service GmbH has over 35 years of experience in the production of packed GC columns. Over 500 stationary phases, over 50 support materials, and over 100 adsorption media are in stock, so that even exotic column demands can be fulfilled quickly and reliably. In terms of hardware, our customers can choose between durable stainless steel tubing or the exceptionally inert INNOSTeel tubing, a stainless steel tubing internally coated with silica which combines the flexibility and break-resistance of stainless steel with the excellent chromatographic performance of glass columns. Ask for your customized quote!



Your GC is not equipped for packed columns? We offer connectors for attaching packed columns to standard capillary ports! For more information refer to our catalogue 2020-d, p. 33.

INNOSTeel Tubing (left)
1/8" OD x 2.1 mm ID

Micropacked Column (right)
1/16" OD x 1.0 mm ID



– Chromatographie Service GmbH

Am Parir 27 · 52379 Langerwehe/GERMANY

Phone +49 24 23 / 40493-0 · Fax +49 24 23 / 40493-49

E-Mail: info@cs-chromatographie.de

Visit our **Online-Shop** at www.cs-chromatography.com