



# Applikation

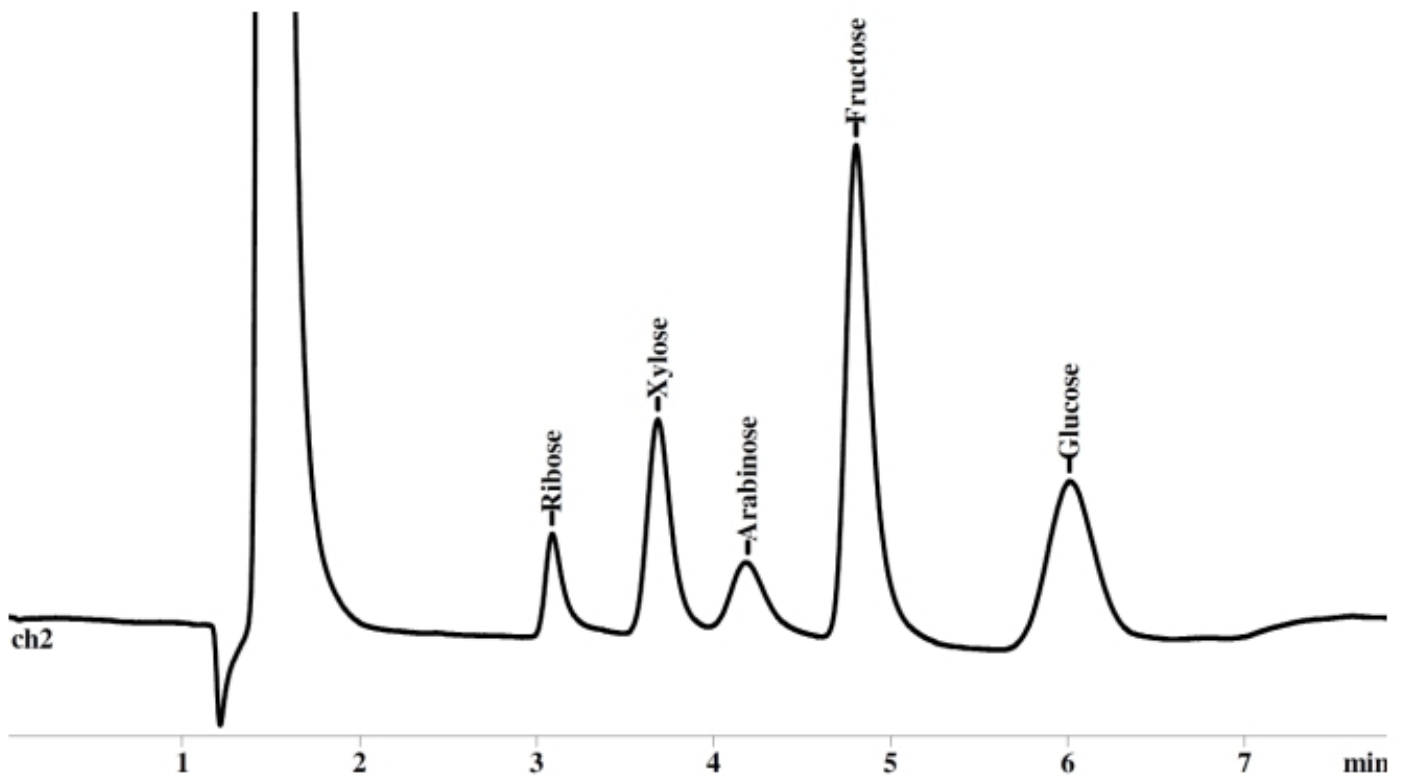
## Details zu HPLC-Applikation Nr. 50

### Zucker

**Säule:** 125 x 4 mm Multospher APS-HP-3 $\mu$  HILIC

**Art.-Nr.:** 5841128-H

**HPLC-Bedingungen:** Eluent: Acetonitril : Wasser (80 : 20)  
Fluss: 1 mL/min  
Temperatur: RT  
Detektor: RI



**Peaks:** Ribose  
Xylose  
Arabinose  
Fructose  
Glucose